



Discontinuance: SD1486

Parker Hannifin
Electromechanical & Drives Div.
9225 Forsyth Park Dr.
Charlotte, NC 28273
704.588.3246
www.parkermotion.com

For Release: Immediately
Date: June 29, 2018
Contact: Jim Wiley – Product Manager

Compax3 Order Code Simplification — Feedback Option

Rohnert Park, CA June, 2018 — Parker Hannifin, EM&D is removing the F11 order code option from all Compax3 drive models, effective immediately. The F10 option is a direct and fully compatible replacement for the F11 for all drive models.

The following part numbers are impacted:

SxxxVxF11IxxTxxMxx

HxxxV4F11IxxTxxMxx

MxxxD6F11IxxTxxMxx

(xx equals any valid option for these models)

All custom products based on the above products

The Compax3 has been available with three different Feedback option codes:

F10 - Standard resolver feedback support

F11 - SinCos© (Hiperface)

F12 - Quadrature encoder, 1Vpp sinecosine, Endat 2.1

Effectively, the new options will be as follows:

F10 - Standard resolver feedback support & SinCos© (Hiperface)

F12 - Quadrature encoder, 1Vpp sinecosine, Endat 2.1

Availability

The F11 option code will be disabled effective immediately. F10 option code is a direct replacement.

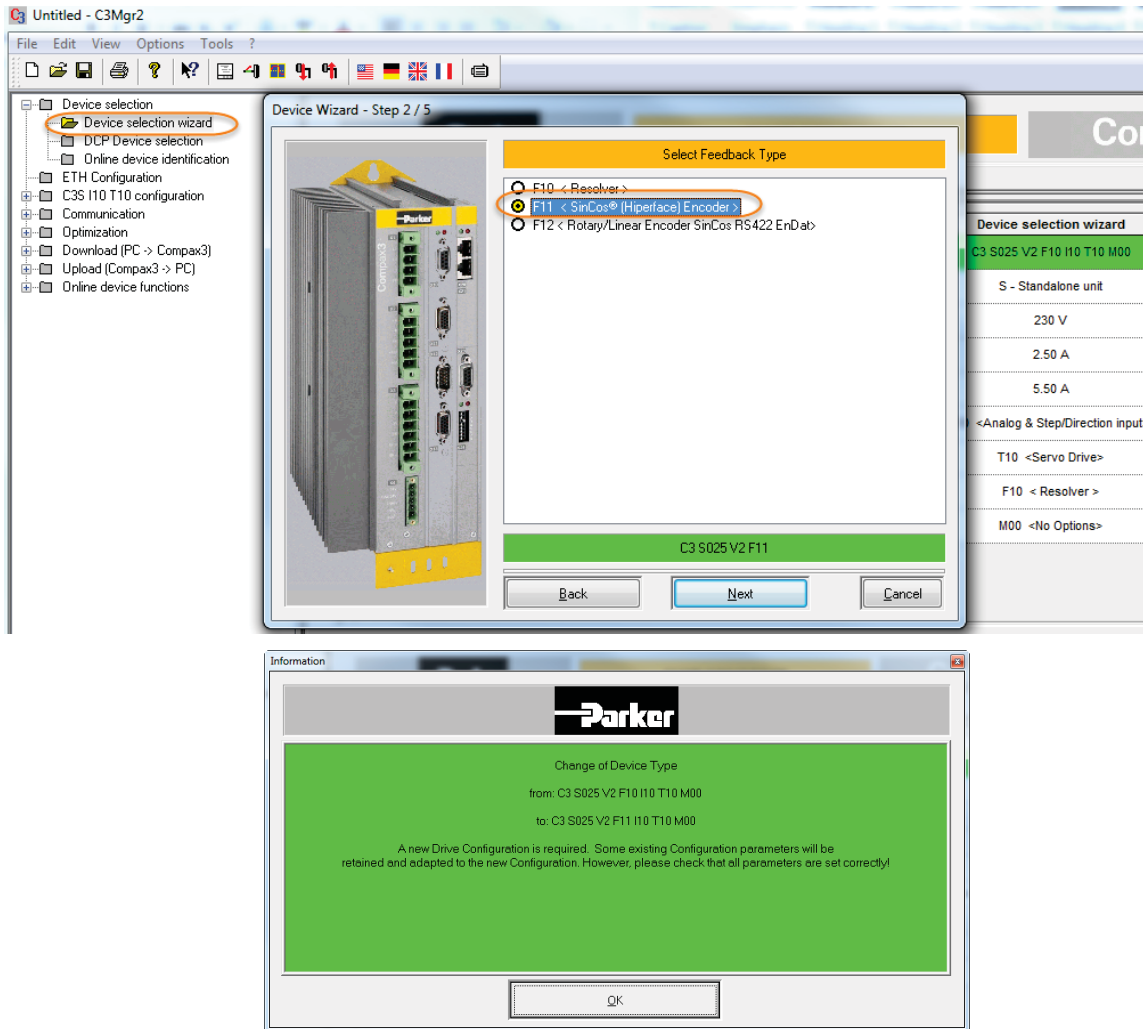
Suggested Replacements

In all cases the F11 can be replaced by the F10 option. For example, model number

S025V2F11I31T11M00 should now be ordered as S025V2F10I31T11M00

Customers with existing Compax3 project files for F11 models can download the files directly to F10 drives without modification. In new applications that require SinCos© (Hiperface) feedback, user can simply select F11 in the device selection wizard when configuring the drive. This will allow the user to configure the drive for a motor with SinCos© (Hiperface) feedback.

Note: All information in this bulletin is considered proprietary and not intended for unauthorized distribution



About Parker Electromechanical & Drives Div.

A division of Parker Hannifin Corporation's Motion Systems Group, Electromechanical & Drives Division offers a wide range of motion control systems to meet any application need. Designed for easy configuration to make complete motion systems ranging from miniature precision for life sciences to overhead gantries for the factory floor. Custom original equipment manufacturer solutions ranging from electronic propulsion for hybrid vehicles to multi ton granite based multi axis high speed laser guided machine centers. Electromechanical and drive products are sold via independent authorized Automation Technology Centers—a group of nearly 100 professional, highly trained organizations with more than 135 points-of-presence throughout the world. An informative and up-to-date website with downloadable libraries, tutorials, and background information on motion control and automation is located at www.parker.com/emdusa

About Parker Hannifin

A Fortune 250 global leader with annual sales exceeding \$13 billion, Parker Hannifin is the world's leading diversified manufacturer of motion and control technologies and systems, providing precision-engineering solutions for a wide variety of mobile, industrial, and aerospace markets. The company employs approximately 49,000 people in 50 countries around the world. Parker's engineering expertise and broad range of core technologies uniquely positions the company to solve some of the world's greatest engineering challenges. By partnering with customers, Parker improves their productivity and profitability and seeks new ways to solve humanity's biggest challenges. For more information, visit the company's Web site at www.parker.com/aboutus.

Please direct all technical inquiries to:

Email: emn_support@parker.com
Phone: 1-800-358-9070

Note: All information in this bulletin is considered proprietary and not intended for unauthorized distribution