

E. Electrical Modules

TP—Electrical Module

No Manual exists for this electrical module. A drawing is attached.

For additional information, please refer to our catalog or contact our Sales department. We will be glad to assist you.

How to Reach Us

Sale, Service and Information about ATI products:

ATI Industrial Automation

1031 Goodworth Drive

Apex, NC 27539 USA

www.ati-ia.com

Tel: +1.919.772.0115

Fax: +1.919.772.8259

E-mail: info@ati-ia.com

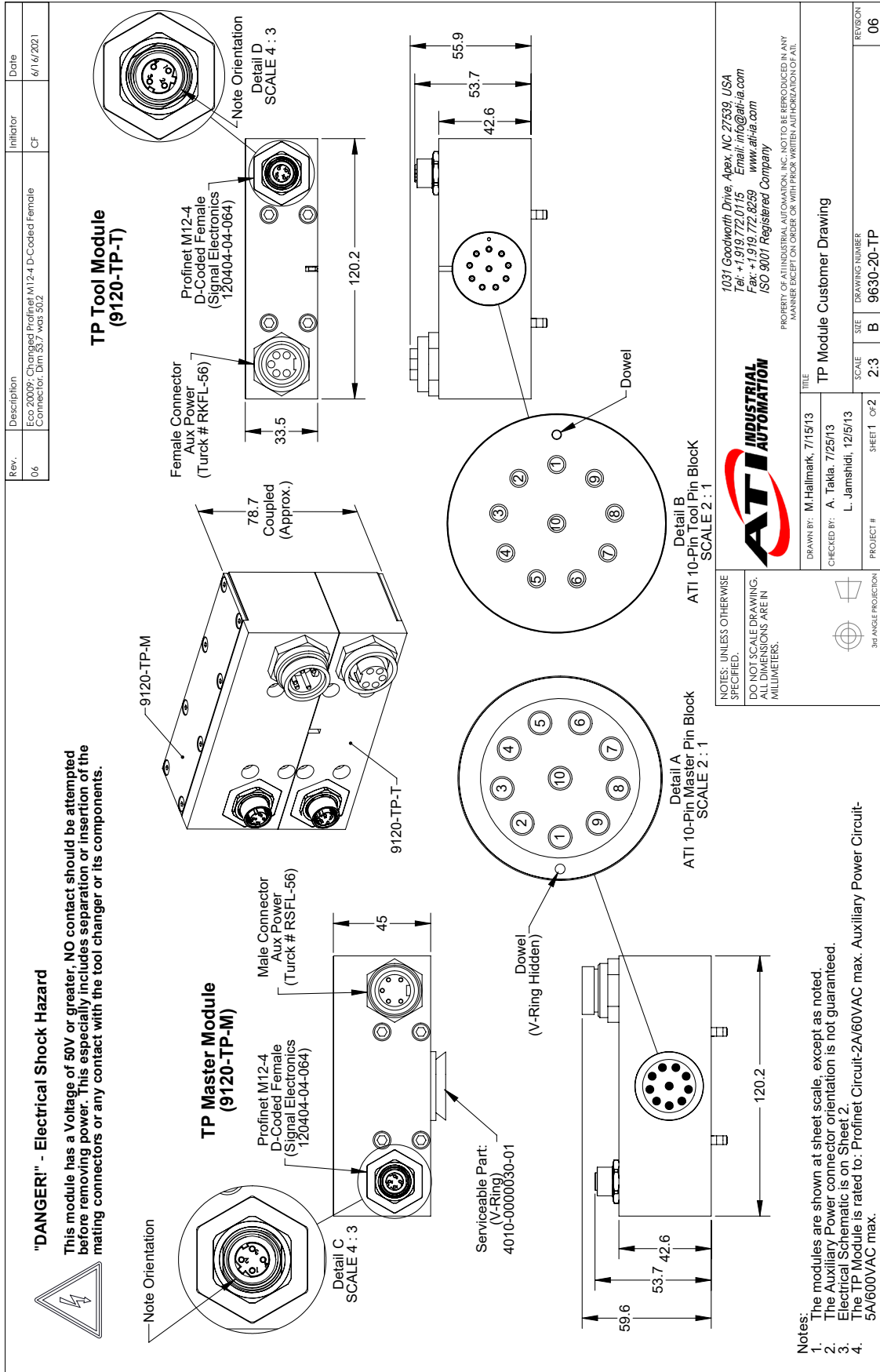
Technical support and questions:

Application Engineering

Tel: +1.919.772.0115, Option 2, Option 2

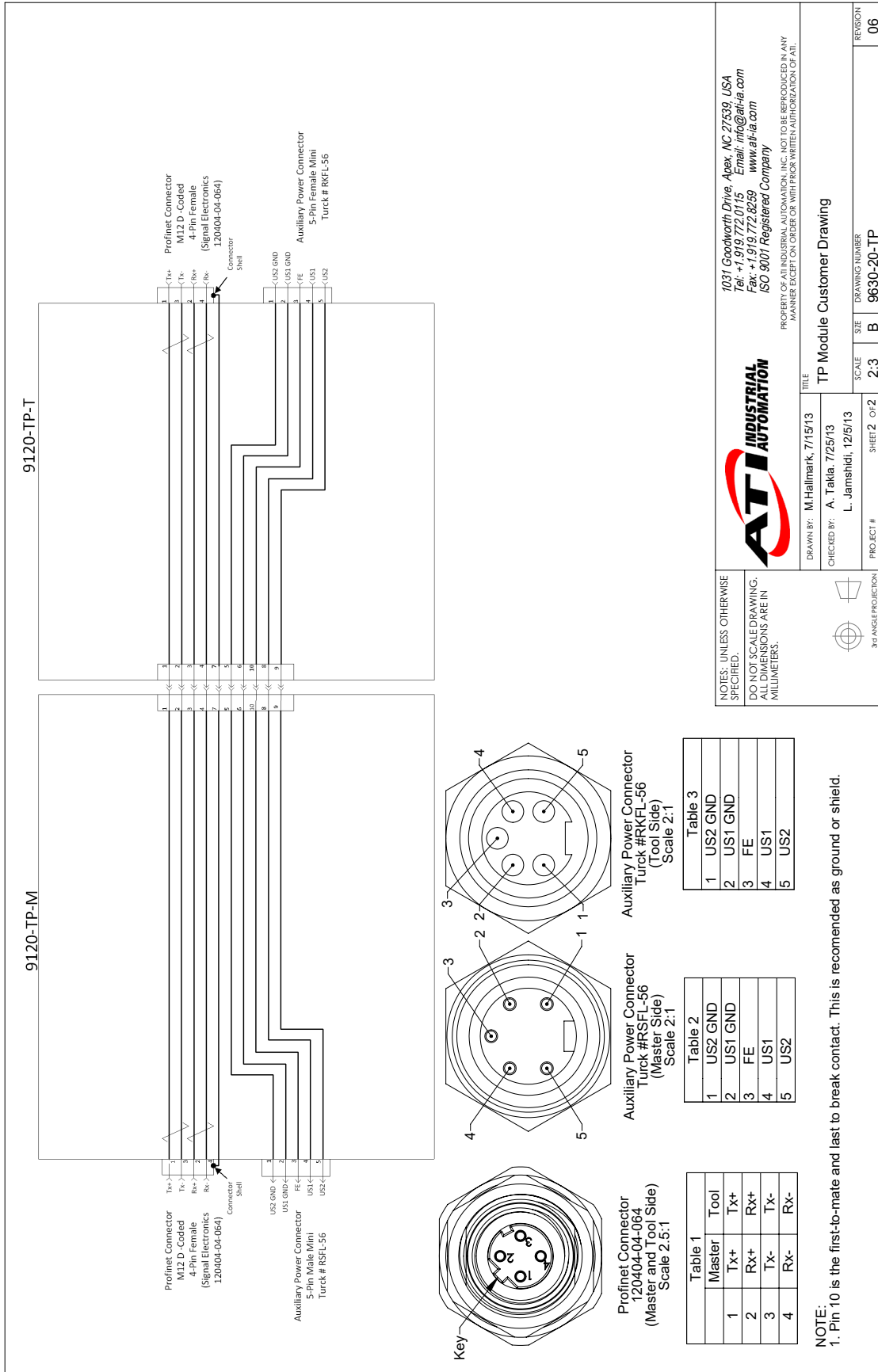
Fax: +1.919.772.8259

E-mail: mech_support@ati-ia.com



Rev.	Description	Initiator	Date
06	Eco 2009: Changed Profinet M12-4 D-Coded Female Connector, Dim 53.7 was 50.2	CF	6/16/2021

		1031 Goodworth Drive, Apex, NC 27539, USA Tel: +1.919.772.0115 Email: info@ati-ia.com Fax: +1.919.772.8259 www.ati-ia.com ISO 9001 Registered Company	
PROPERTY OF ATI INDUSTRIAL AUTOMATION, INC. NOT TO BE REPRODUCED IN ANY MANNER EXCEPT ON ORDER OR WITH PRIOR WRITTEN AUTHORIZATION FROM ATI.			
NOTES: UNLESS OTHERWISE SPECIFIED, DO NOT SCALE DRAWING. ALL DIMENSIONS ARE IN MILLIMETERS.		TITLE TP Module Customer Drawing	
DRAWN BY: M. Hallmark, 7/15/13	CHECKED BY: A. Takla, 7/25/13	SCALE 2:3	SHEET 1 OF 2
PROJECT #		DRAWING NUMBER 9650-20-TP	REVISION 06



ATI INDUSTRIAL AUTOMATION

1037 Goodworth Drive, Apex, NC 27539, USA
 Tel: +1.919.772.0115 Email: info@ati-ia.com
 Fax: +1.919.772.8259 www.ati-ia.com
 ISO 9001 Registered Company

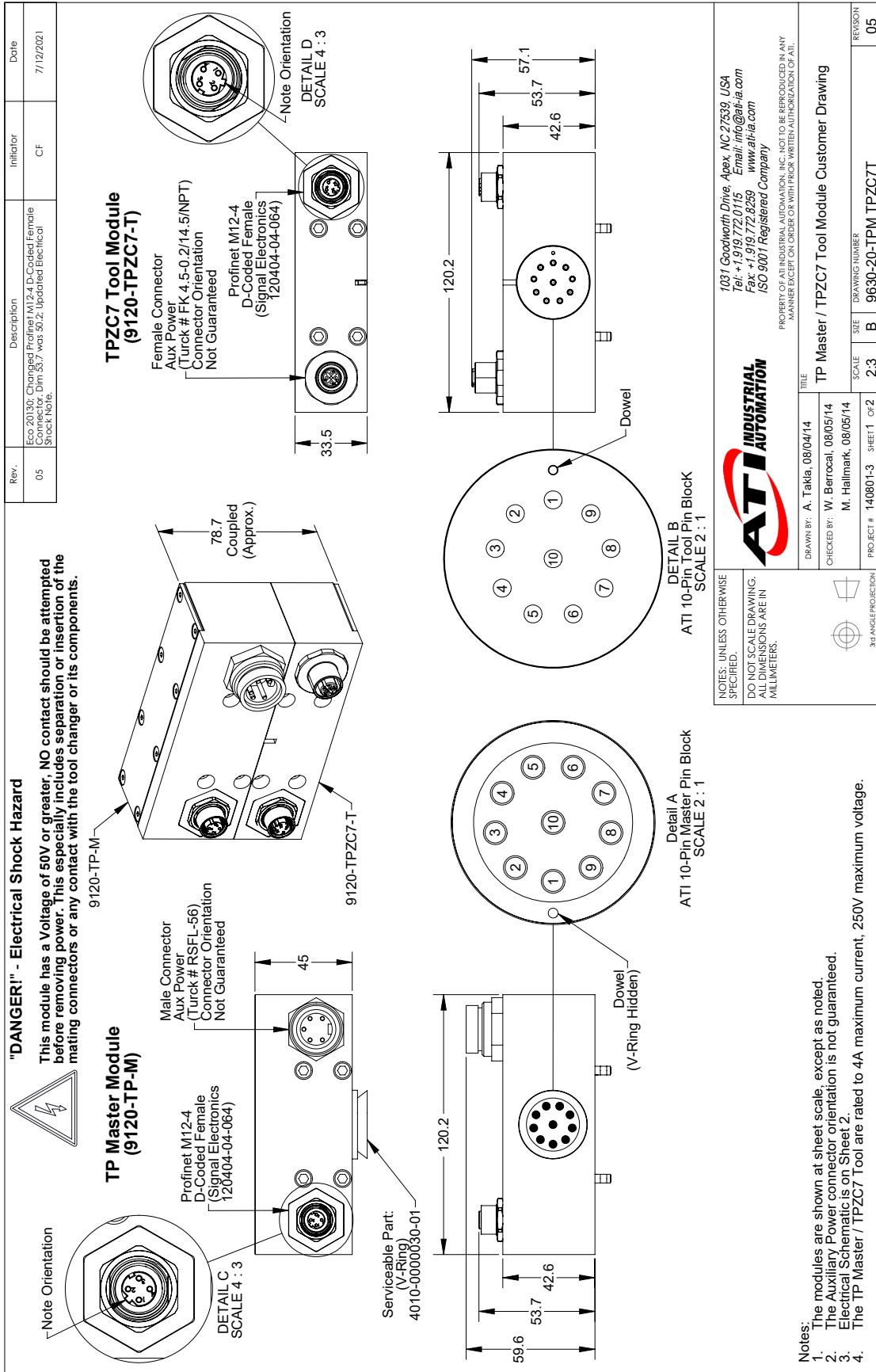
PROPERTY OF ATI INDUSTRIAL AUTOMATION, INC. NOT TO BE REPRODUCED IN ANY MANNER EXCEPT ON ORDER OR WITH PRIOR WRITTEN AUTHORIZATION OF ATI.

TP Module Customer Drawing

DRAWN BY: M.Hallmark, 7/15/13
 CHECKED BY: A. Takla, 7/25/13
 L. Jamshidi, 12/5/13

SCALE: 2:3
 SIZE: B
 DRAWING NUMBER: 9630-20-TP
 SHEET 2 OF 2
 PROJECT #

REVISON: 06



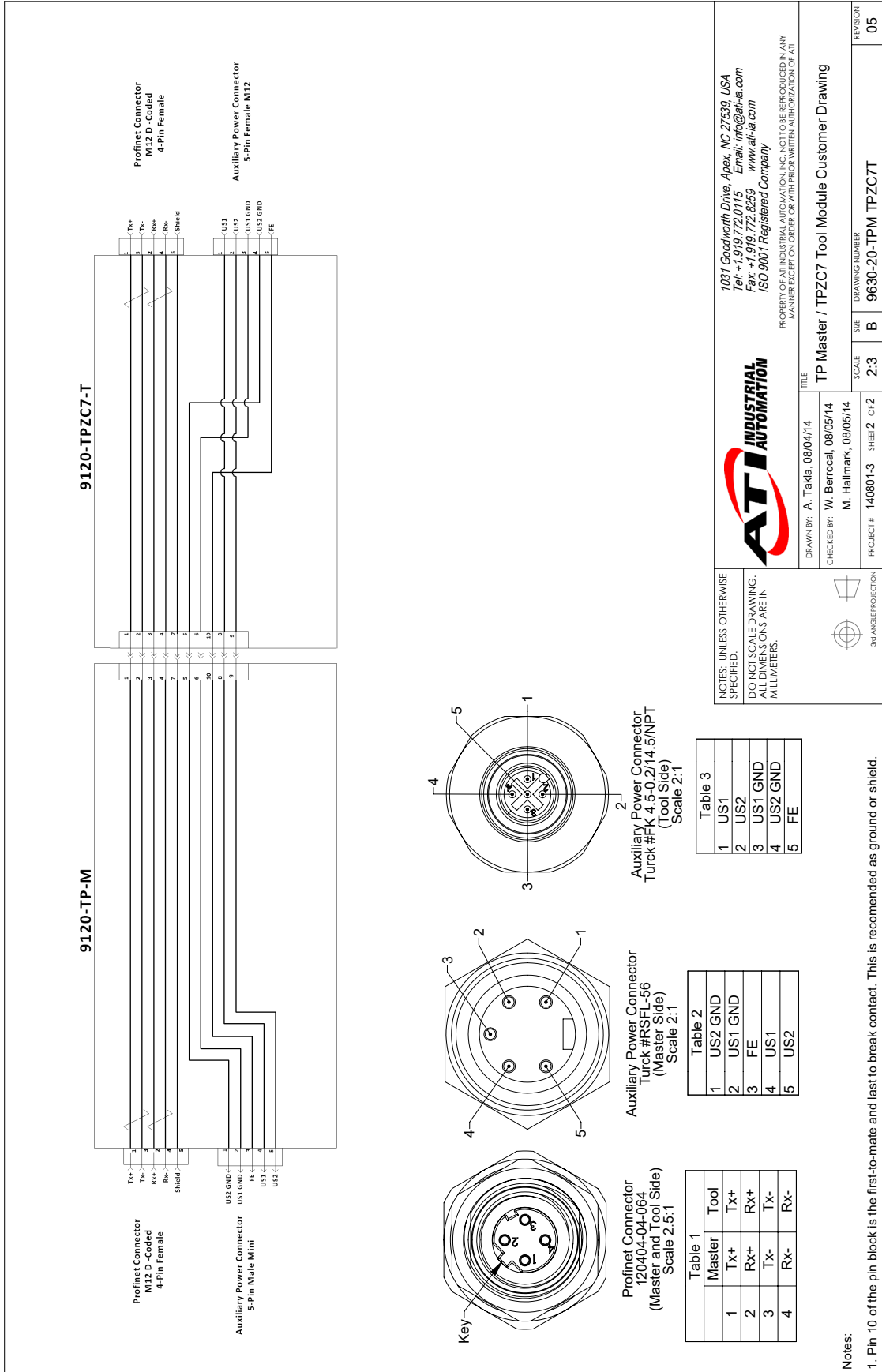
"DANGER!" - Electrical Shock Hazard
 This module has a Voltage of 50V or greater. NO contact should be attempted before removing power. This especially includes separation or insertion of the mating connectors or any contact with the tool changer or its components.

Rev.	05	Description	Initiator	Date
		Eco 20130: Changed Profinet M12-4 D-Coded Female Connector, Dim 3.57 was: 50.2; Updated Electrical Sheet Note.	CF	7/12/2021

NOTES: UNLESS OTHERWISE SPECIFIED: DO NOT SCALE DRAWING. ALL DIMENSIONS ARE IN MILLIMETERS.		TITLE TP Master / TPZC7 Tool Module Customer Drawing	
DRAWN BY: A. Takla, 08/04/14	CHECKED BY: W. Berrocal, 08/05/14 M. Hallmark, 08/05/14	SCALE 2:3	DRAWING NUMBER 9630-20-TPM TPZC7T
PROJECT # 140801-3	SHEET 1 of 2	SIZE B	REVISION 05

Notes:
 1. The modules are shown at sheet scale, except as noted.
 2. The Auxiliary Power connector orientation is not guaranteed.
 3. Electrical Schematic is on Sheet 2.
 4. The TP Master / TPZC7 Tool are rated to 4A maximum current, 250V maximum voltage.

ATI INDUSTRIAL AUTOMATION
 1031 Goodworth Drive, Apex, NC 27539, USA
 Tel: +1.919.772.0115 Email: info@ati-ia.com
 Fax: +1.919.772.8259 www.ati-ia.com
 ISO 9001 Registered Company
 PROPERTY OF ATI INDUSTRIAL AUTOMATION, INC. NOT TO BE REPRODUCED IN ANY MANNER EXCEPT ON ORDER OR WITH PRIOR WRITTEN AUTHORIZATION OF ATI.



ATI INDUSTRIAL AUTOMATION

1031 Goodworth Drive, Apex, NC 27539, USA
 Tel: +1.919.772.0115 Email: info@ati-ia.com
 Fax: +1.919.772.8259 www.ati-ia.com
 ISO 9001 Registered Company

PROPERTY OF AT INDUSTRIAL AUTOMATION, INC. NOT TO BE REPRODUCED IN ANY MANNER EXCEPT ON ORDER OR WITH PRIOR WRITTEN AUTHORIZATION OF ATI.

TP Master / TPZC7 Tool Module Customer Drawing

SCALE: 2:3
 DRAWING NUMBER: 96330-20-TPM-TPZC7T
 REVISION: 05

PROJECT #: 140801-3 SHEET 2 OF 2

30° ANGLE PROJECTION

DO NOT SCALE DRAWING. ALL DIMENSIONS ARE IN MILLIMETERS.

NOTES: UNLESS OTHERWISE SPECIFIED.